

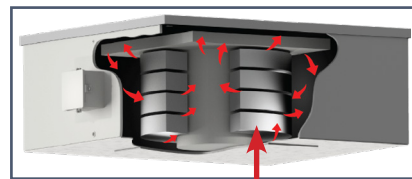
## Sugaron Electromagnet:

- ◇ Balanced Magnetic Circuit for maximum efficiency.
- ◇ Expansion of high dielectric cooling oil takes place inside the magnet box - no additional plumbing or oil tanks!
- ◇ Pressure relief valve prevents moisture from getting into magnet.
- ◇ Step face design
- ◇ Continuous protection of processing equipment preventing costly downtime.



## Anodized Aluminum Strap Coils

Dings electromagnetic coils are wound with an anodized aluminum strap— an exclusive design that generates more magnetism than any other on the market and exceeds Class H insulation rating! This design outlasts and out-performs copper wire with polymer insulation or bare aluminum with Nomex® insulation.



Oil Flow =   Anodized Aluminum Strap



**20-Year Warranty  
on Coil Burnout**

## Dings' Sugaron Electromagnet

Dings Sugaron Electromagnet mounts inside chutes that carry deep loads of processing materials. It combines high surface strength with extended magnetic range. Sugar cane can't push attracted iron off with the step face design. The Sugaron captures metal plates, machetes, cutting tools, etc. in mills processing sugar cane. This electromagnetic separator protects equipment from breakage and damage, prevent costly repairs and production line shutdowns.

Dings Sugaron Electromagnets are available in widths ranging from 54 " to 84". Units have been made for specialty applications. Contact a Dings magnetic expert today.

For quote contact the Dings' factory.

Phone: 414-672-7830

Email: [magsales@dingsco.com](mailto:magsales@dingsco.com)

## Dings Electromagnetic Coils

- ◇ No insulation is needed with anodized aluminum straps—eliminating the major cause of coil failure (insulation breakdown)
- ◇ More magnetism and separating power - generated by extra turns
- ◇ Each turn is exposed to oil-cooling - assuring a stronger, more efficient magnet
- ◇ Eliminates the need for external oil expansion pipes or tanks that require maintenance and can be damaged



## Dings Electromagnetic Rectifier

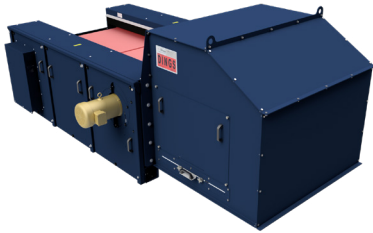
All electromagnets require a DC power supply. Rectifiers convert alternating current (AC) from your local power source to the necessary direct current (DC) needed by electromagnets.

- ◇ Maintenance-free
- ◇ Overload capacity for short infrequent periods
- ◇ Corrosion protection in extreme environments

## More Dings Company Magnetic Separation Equipment

### Eddy Current Separator

Separate non-ferrous metal



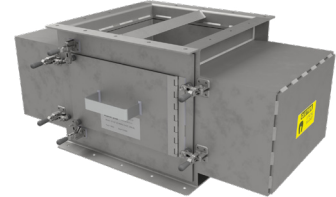
### Deep Draw Drum Magnet

Lifetime warranty on magnetism



### Quick Clean Perma Chute Magnet

Lifetime warranty on magnetism



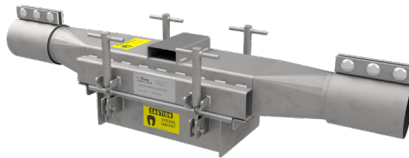
### Ferroplate Magnet

Lifetime warranty on magnetism



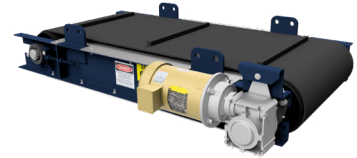
### Pneumatic Inline Magnet

Powerful rare earth magnets available



### Overhead Self-Cleaning Permanent Magnet

Lifetime warranty on magnetism



### Rare Earth Ferroplate Magnet

More holding power



### Overhead Self-Cleaning Electromagnet

20 year warranty on coil burnout



### Magnetic Head Pulley

Available in 3 different strength series



## Engineering Driven - Customer Service Focused



Dings Company Magnetic Group engineering and sales staff work together from our Milwaukee, WI factory to provide outstanding customer service from experts in magnetic separation. We listen to our customers to gain an understanding of their needs and apply our experience in their trade to provide magnetic separation equipment that is sized and positioned for the best possible performance in their specific application.