

## Rendering Electromagnet:

- ◇ Expansion of high dielectric cooling oil takes place inside the magnet box - no additional plumbing or oil tanks!
- ◇ Easy access to oil level, oil drain and oil fill plugs save cost and man hours
- ◇ Pressure relief valve prevents moisture from getting into magnet
- ◇ Full stainless steel face plate



## Dings' Rendering Electromagnet

Dings Rendering Electromagnet is designed to capture knives and other metal objects as they fall down an inclined chute along with entrails and other meat processing byproducts. The magnet's sloped design and 4" step protects and holds attracted metal until the chute is ready for cleaning. Turn off power to the magnet and attracted metal falls freely away. The tapered step-face helps hold contaminants out of product flow to minimize wash-off.

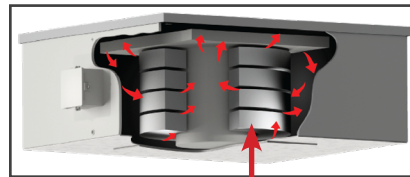
For quote contact the Dings' factory.

Phone: 414-672-7830

Email: [magsales@dingsco.com](mailto:magsales@dingsco.com)

## Anodized Aluminum Strap Coils

Dings electromagnetic coils are wound with an anodized aluminum strap— an exclusive design that generates more magnetism than any other on the market and exceeds Class H insulation rating! This design outlasts and out-performs copper wire with polymer insulation or bare aluminum with Nomex® insulation.



Oil Flow = 

Anodized Aluminum Strap



**20-Year Warranty on Coil Burnout**

## Dings Electromagnetic Coils

- ◇ No insulation is needed with anodized aluminum straps—eliminating the major cause of coil failure (insulation breakdown)
- ◇ More magnetism and separating power - generated by extra turns
- ◇ Each turn is exposed to oil-cooling - assuring a stronger, more efficient magnet
- ◇ Eliminates the need for external oil expansion pipes or tanks that require maintenance and can be damaged



## Dings Electromagnetic Rectifier

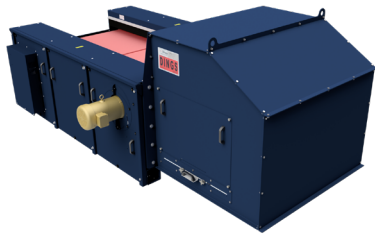
All electromagnets require a DC power supply. Rectifiers convert alternating current (AC) from your local power source to the necessary direct current (DC) needed by electromagnets.

- ◇ Maintenance-free
- ◇ Overload capacity for short infrequent periods
- ◇ Corrosion protection in extreme environments

## More Dings Company Magnetic Separation Equipment

### Eddy Current Separator

Separate non-ferrous metal



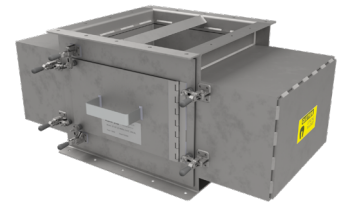
### Deep Draw Drum Magnet

Lifetime warranty on magnetism



### Quick Clean Perma Chute Magnet

Lifetime warranty on magnetism



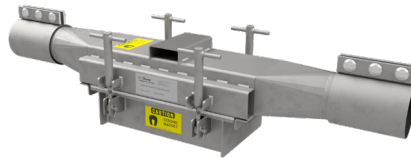
### Ferroplate Magnet

Lifetime warranty on magnetism



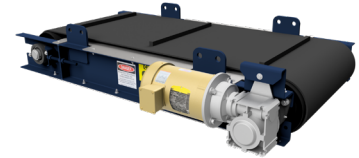
### Pneumatic Inline Magnet

Powerful rare earth magnets available



### Overhead Self-Cleaning Permanent Magnet

Lifetime warranty on magnetism



### Rare Earth Ferroplate Magnet

More holding power



### Overhead Self-Cleaning Electromagnet

20 year warranty on coil burnout



### Magnetic Head Pulley

Available in 3 different strength series



## Engineering Driven - Customer Service Focused



Powerful Magnetic Products Since 1899

Dings Company Magnetic Group engineering and sales staff work together from our Milwaukee, WI factory to provide outstanding customer service from experts in magnetic separation. We listen to our customers to gain an understanding of their needs and apply our experience in their trade to provide magnetic separation equipment that is sized and positioned for the best possible performance in their specific application.