

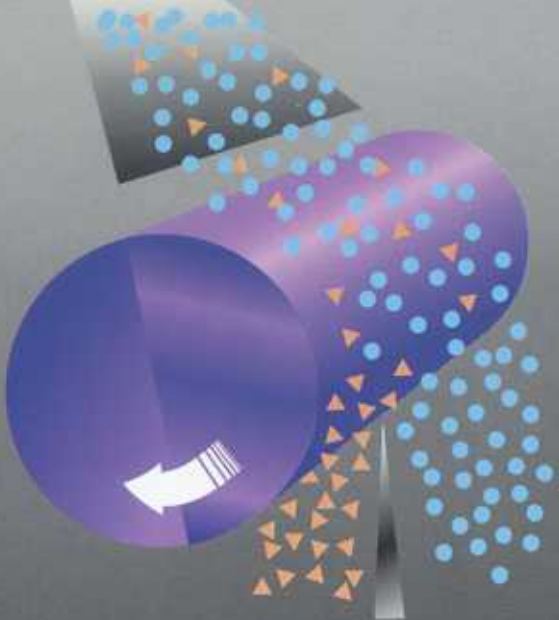
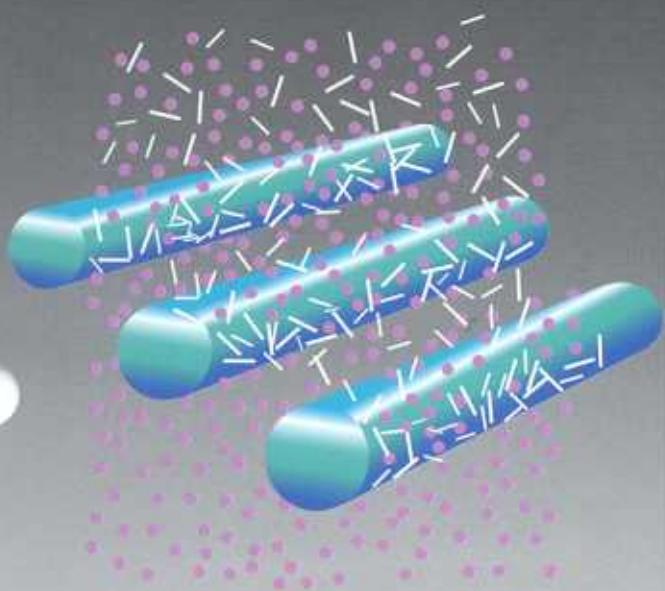
**PROCESS
INDUSTRIES**

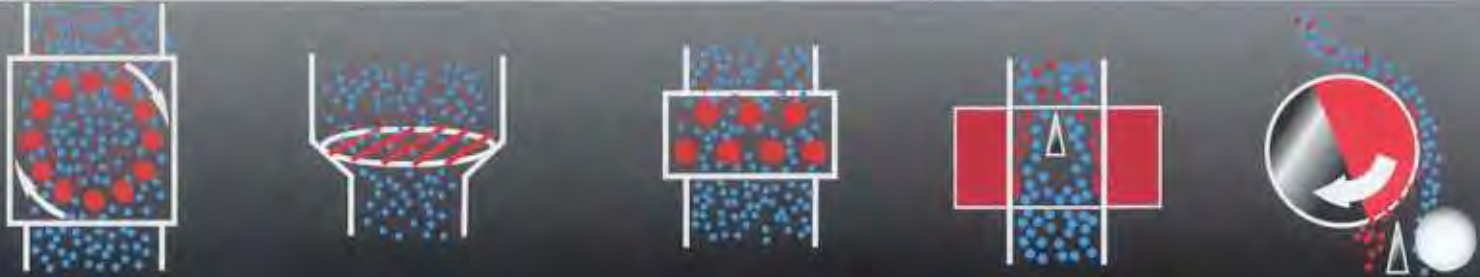
 **Dings**
magnetic group

Magnetic

RESULTS

**SO SIMPLE . . .
SO EFFECTIVE**





Whatever material you're processing, Dings has the magnetic solution to meet your needs. Regardless of size or speed, Dings offers magnets to separate metals quickly and efficiently. Reliable, magnetic results from Dings Magnetic Group.

Dings grate magnets are the perfect choice for removing fuzz iron and other small ferrous particles from free-flowing powders and other granular materials. All grate magnet styles are available with either high quality ceramic magnets for general applications or powerful rare earth magnets for difficult iron removal or to ensure the highest product purity.



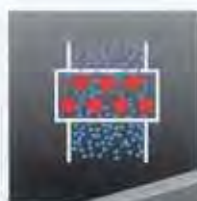
Rotary Grate

- Ideal for materials that do not flow easily or tend to plug up standard grates.
- Rotary action improves separation by agitating cohesive powders.
- Typical applications include pulverized minerals, ceramics, fibrous substances and fine cohesive materials.



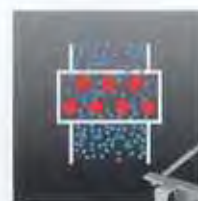
Tubes, Grid Grates and Unhoused Grates

- 1" diameter tubes available in lengths from 3 inches to more than 2 feet.
- Portable grid grates can be sized to fit in confined spaces or irregular openings.
- Unhoused grates may be placed under any product flow or over a receiving pit for bulk unloading.
- Standard 304 stainless steel construction.



Housed Grates

- Flanged housing allows grate to be bolted directly into a chute.
- Round chute and other adapters available from Dings.
- Front access door for easy removal of grate assembly for cleaning.
- Single, double, and multiple bank grate styles.
- Optional deflectors for optimum separation.



Easy Clean Grates

- For applications requiring frequent cleaning.
- Tube-in-tube design eliminates replacement of wipers.
- Entire drawer assembly pulls out for cleaning.
- PLC controlled auto clean version available for automatic cleaning in inaccessible areas.

GRATE MAGNETS



Dings Ferroplate plate magnets are a simple, economical solution for the removal of occasional tramp metal. Their high surface strength makes them ideally suited for sloping chute applications. Dings' unique raised pole design was specifically developed to provide the optimum magnetic field to not only attract metal, but hold it as well. All Dings Ferroplate styles are available in your choice of five different ceramic magnetic strengths as well as high strength rare earth.



Flat Plate Magnets

- Hinged for simple installation in sloped chutes.
- Liquid tight face.
- Stainless steel construction.
- Optional sanitary finish or four pole construction.
- Sizes to fit chutes from 4" to 96" or larger.
- Conveyor magnet style for suspension over moving product.

Hump Magnets

- Single and double hump styles.
- Hinged Ferroplate for easy inspection and cleaning.
- Self-cleaning Easy Clean style for hard-to-reach installations.
- Hydro Hump for liquid applications.
- Round chute adapters available.
- Carbon steel or stainless steel construction.



Perma Chute

- For use where space is limited, with materials which won't pass freely through a grate magnet, or when the chute is too vertical for a standard plate magnet.
- Quick Clean model features built-in drawer for easy removal of attracted metal.
- Options include: round chute adapters, sanitary finish and door closure sensors.



Pneumatic In-Line Magnet

- Locate anywhere along a pneumatic line – horizontal, vertical or incline.
- Plate magnet swings away for easy cleaning, preventing "wipe-off" of tramp iron into product stream.
- Cartridge magnet for removal of fine tramp iron in free flowing powders.

FERROPLATE MAGNETS

Dings magnetic drums are designed to continuously remove large quantities of ferrous metal for product purification or to concentrate and reclaim product for recycling. Their self-cleaning design means you won't have to interrupt the product flow for a cleaning cycle. High strength permanent magnets – either ceramic or rare earth – function at top efficiency, day in and day out. All Dings drum magnets feature our patented DFC magnetic circuit. This unique design assures you of a uniform magnetic field across the entire surface of the magnet. You won't have to worry about the drop off in magnetic field near the ends of the drum as you do with competitive designs.



Drum Only Type PC

- Mounts easily with pillow block bearing and shaft clamp.
- Choice of standard (radial) or agitating (lateral) pole designs.
- Widths from 8" through 48".
- Ceramic drum diameters – 12", 18" and 24".
- Rare earth drum diameter – 12".

Drum and Housing Type FC

- Furnished with drive motor, feed leveler, splitter and housing.
- Multiple drum arrangements available.
- Easy lubrication with removal of sealed cover plates on both sides of housing.

MAGNETIC DRUMS

Dings offers a complete line of magnetic separators for every application. Contact us today to discuss your particular needs.

Providing Magnetic Separation Solutions Since 1899



4740 W. Electric Avenue
Milwaukee, WI 53219
414.672.7830
414.672.5354 Fax
www.dingsco.com