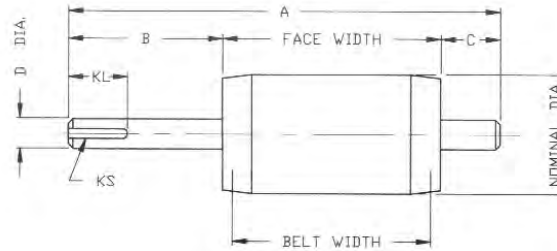




**PERMA PULLEY
DIMENSIONS**

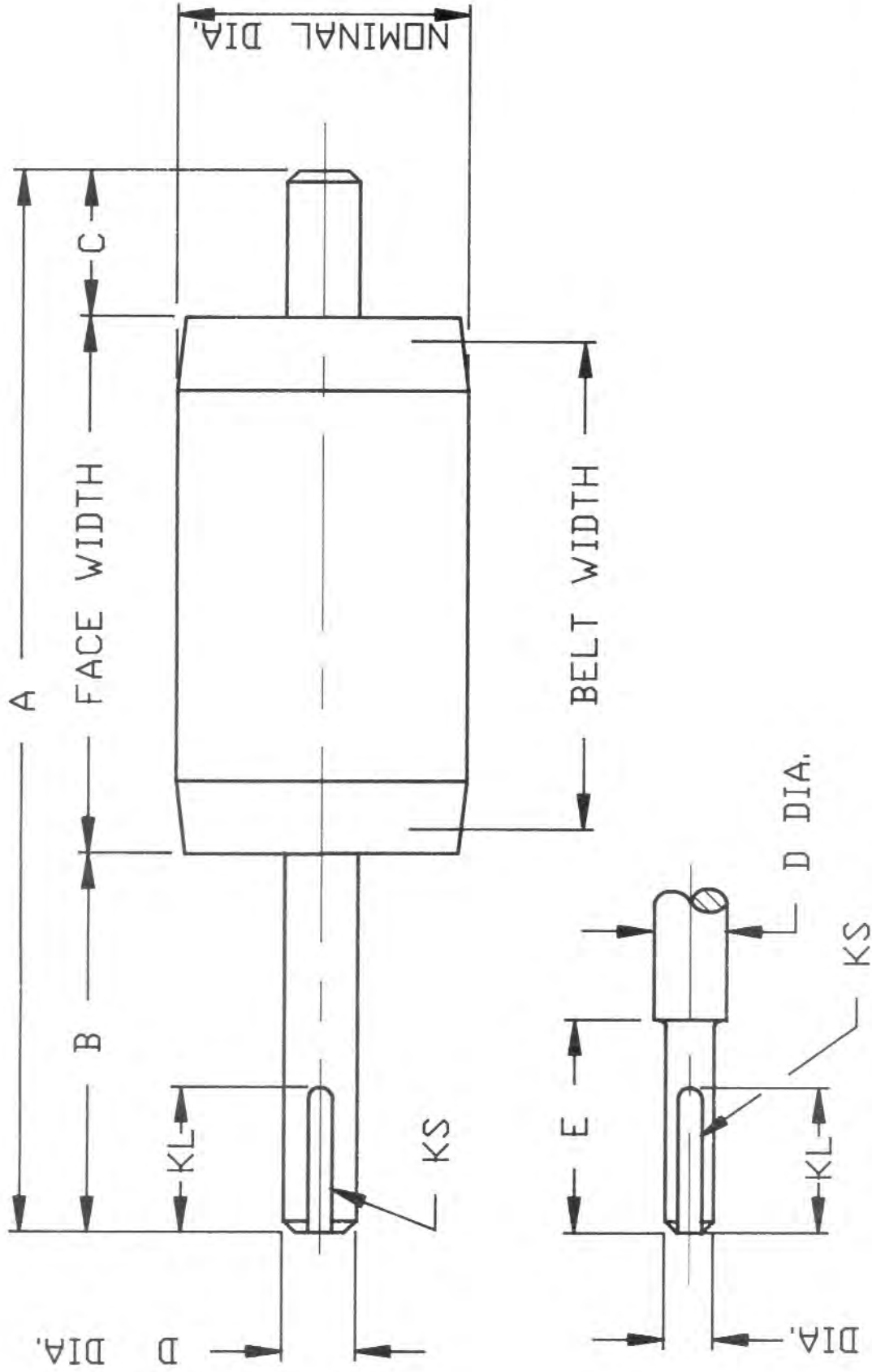


ALL DIMENSIONS IN INCHES

| NOMINAL DIAMETER | BELT WIDTH | FACE WIDTH | A | B | C | D | KL | KS |
|------------------|------------|------------|---------|--------|--------|---------|---------|-----------|
| 12 | 12 | 14 | 28 1/4 | 9 | 5 1/4 | 1 15/16 | 3 1/2 | 1/2X1/4 |
| | 14 | 16 | 30 1/4 | 9 | 5 1/4 | 1 15/16 | 3 1/2 | 1/2X1/4 |
| | 16 | 18 | 32 1/4 | 9 | 5 1/4 | 1 15/16 | 3 1/2 | 1/2X1/4 |
| | 18 | 20 | 34 1/4 | 9 | 5 1/4 | 1 15/16 | 3 1/2 | 1/2X1/4 |
| | 20 | 22 | 34 1/4 | 9 | 5 1/4 | 1 15/16 | 3 1/2 | 1/2X1/4 |
| | 24 | 26 | 43 1/4 | 11 | 6 1/4 | 2 7/16 | 4 1/2 | 5/8X5/16 |
| | 30 | 32 | 49 1/4 | 11 | 6 1/4 | 2 7/16 | 4 1/2 | 5/8X5/16 |
| | 36 | 38 | 55 1/4 | 11 | 6 1/4 | 2 7/16 | 4 1/2 | 5/8X5/16 |
| 15 | 42 | 44 | 63 3/4 | 12 1/4 | 7 1/2 | 2 15/16 | 4 1/2 | 3/4X3/8 |
| | 48 | 50 | 70 3/4 | 12 3/4 | 8 | 2 15/16 | 4 1/2 | 3/4X3/8 |
| | 16 | 18 | 35 1/4 | 11 | 6 1/4 | 2 7/16 | 4 1/2 | 5/8X5/16 |
| | 18 | 20 | 37 1/4 | 11 | 6 1/4 | 2 7/16 | 4 1/2 | 5/8X5/16 |
| | 20 | 22 | 39 1/4 | 11 | 6 1/4 | 2 7/16 | 4 1/2 | 5/8X5/16 |
| | 24 | 26 | 45 3/4 | 12 1/4 | 7 1/2 | 2 15/16 | 4 1/2 | 3/4X3/8 |
| | 30 | 32 | 51 3/4 | 12 1/4 | 7 1/2 | 2 15/16 | 4 1/2 | 3/4X3/8 |
| | 36 | 38 | 57 3/4 | 12 1/4 | 7 1/2 | 2 15/16 | 4 1/2 | 3/4X3/8 |
| 18 | 42 | 44 | 69 1/4 | 15 1/2 | 9 3/4 | 3 7/16 | 5 1/2 | 7/8X7/16 |
| | 48 | 51 | 76 1/4 | 16 | 10 1/4 | 3 7/16 | 5 1/2 | 1X1/2 |
| | 18 | 20 | 37 1/4 | 11 | 6 1/4 | 2 7/16 | 4 1/2 | 5/8X5/16 |
| | 20 | 22 | 41 3/4 | 12 1/4 | 7 1/2 | 2 15/16 | 4 1/2 | 3/4X3/8 |
| | 24 | 26 | 45 3/4 | 12 1/4 | 7 1/2 | 2 15/16 | 4 1/2 | 3/4X3/8 |
| | 30 | 32 | 51 3/4 | 12 1/4 | 7 1/2 | 2 15/16 | 4 1/2 | 3/4X3/8 |
| | 36 | 38 | 63 1/4 | 15 1/2 | 9 3/4 | 3 7/16 | 5 1/2 | 7/8X7/16 |
| | 42 | 44 | 69 1/4 | 15 1/2 | 9 3/4 | 3 7/16 | 5 1/2 | 7/8X7/16 |
| 20 | 48 | 50 | 78 1/4 | 17 | 11 1/4 | 3 15/16 | 5 1/2 | 1X1/2 |
| | 20 | 22 | 41 3/4 | 12 1/4 | 7 1/2 | 2 15/16 | 4 1/2 | 3/4X3/8 |
| | 24 | 26 | 51 1/4 | 15 1/2 | 9 3/4 | 3 7/16 | 5 1/2 | 7/8X7/16 |
| | 30 | 32 | 57 1/4 | 15 1/2 | 9 3/4 | 3 7/16 | 5 1/2 | 7/8X7/16 |
| | 36 | 38 | 63 1/4 | 15 1/2 | 9 3/4 | 3 7/16 | 5 1/2 | 7/8X7/16 |
| | 42 | 44 | 71 1/4 | 16 1/2 | 10 3/4 | 3 15/16 | 5 1/2 | 1X1/2 |
| | 48 | 51 | 81 1/4 | 19 | 12 1/4 | 4 7/16 | 6 1/2 | 1X1/2 |
| | 54 | 57 | 87 1/4 | 19 | 12 1/4 | 4 7/16 | 6 1/2 | 1X1/2 |
| 24 | 60 | 63 | 93 1/4 | 19 | 12 1/4 | 4 7/16 | 6 1/2 | 1X1/2 |
| | 24 | 26 | 51 1/4 | 15 1/2 | 9 3/4 | 3 7/16 | 5 1/2 | 7/8X7/16 |
| | 30 | 32 | 59 1/4 | 16 1/2 | 10 3/4 | 3 15/16 | 5 1/2 | 1X1/2 |
| | 36 | 38 | 65 1/4 | 16 1/2 | 10 3/4 | 3 15/16 | 5 1/2 | 1X1/2 |
| | 42 | 44 | 74 1/4 | 18 1/2 | 11 3/4 | 4 7/16 | 6 1/2 | 1X1/2 |
| | 48 | 51 | 81 1/4 | 19 | 12 1/4 | 4 7/16 | 6 1/2 | 1X1/2 |
| | 54 | 57 | 90 1/4 | 21 | 13 1/4 | 4 15/16 | 7 1/2 | 1 1/4X5/8 |
| | 60 | 63 | 96 1/4 | 21 | 13 1/4 | 4 15/16 | 7 1/2 | 1 1/4X5/8 |
| 30 | 24 | 26 | 56 1/4 | 18 1/2 | 11 3/4 | 4 7/16 | 6 1/2 | 1X1/2 |
| | 30 | 32 | 62 1/4 | 18 1/2 | 11 3/4 | 4 7/16 | 6 1/2 | 1X1/2 |
| | 36 | 38 | 68 1/4 | 18 1/2 | 11 3/4 | 4 7/16 | 6 1/2 | 1X1/2 |
| | 42 | 44 | 77 1/4 | 20 1/2 | 12 3/4 | 4 15/16 | 7 1/2 | 1 1/4X5/8 |
| | 48 | 51 | 84 1/4 | 20 1/2 | 12 3/4 | 4 15/16 | 7 1/2 | 1 1/4X5/8 |
| | 54 | 57 | 96 | 24 1/2 | 14 1/2 | 5 7/16 | 9 1/2 | 1 1/4X5/8 |
| | 60 | 63 | 102 | 24 1/2 | 14 1/2 | 5 7/16 | 9 1/2 | 1 1/4X5/8 |
| | 36 | 30 | 32 | 65 1/4 | 20 1/2 | 12 3/4 | 4 15/16 | 7 1/2 |
| 36 | | 38 | 71 1/4 | 20 1/2 | 12 3/4 | 4 15/16 | 7 1/2 | 1 1/4X5/8 |
| 42 | | 44 | 81 1/4 | 22 1/2 | 14 3/4 | 5 15/16 | 9 1/2 | 1 1/2X3/4 |
| 48 | | 50 | 87 1/4 | 22 1/2 | 14 3/4 | 5 15/16 | 9 1/2 | 1 1/2X3/4 |
| 54 | | 56 | 97 1/4 | 24 1/2 | 16 3/4 | 6 1/2 | 12 | 1 1/2X3/4 |
| 60 | | 62 | 103 1/4 | 24 1/2 | 16 3/4 | 6 1/2 | 12 | 1 1/2X3/4 |
| 42 | 36 | 39 | 80 1/4 | 24 1/2 | 16 3/4 | 6 1/2 | 12 | 1 1/2X3/4 |
| | 42 | 45 | 86 1/4 | 24 1/2 | 16 3/4 | 6 1/2 | 12 | 1 1/2X3/4 |
| | 48 | 51 | 92 1/4 | 24 1/2 | 16 3/4 | 6 1/2 | 12 | 1 1/2X3/4 |
| | 54 | 57 | 100 1/4 | 25 1/2 | 17 3/4 | 7 | 12 | 1 1/2X3/4 |
| | 60 | 63 | 106 1/4 | 25 1/2 | 17 3/4 | 7 | 12 | 1 1/2X3/4 |

CONTACT FACTORY ON LARGER AND SMALLER SIZES. DIMENSIONS NOT FOR CONSTRUCTION UNLESS CERTIFIED.

4740 WEST ELECTRIC AVENUE MILWAUKEE, WI 53219 414/672-7830 414/672-5354 FAX www.dingsmagnets.com



OPTIONAL SHAFT END

| A | B | C | D | E | D1 | E | KS | KL |
|---|---|---|---|---|----|---|----|----|
| | | | | | | | | |

OUTLINE DIMENSIONS
 DFC PERMA PULLEY
 ___ DIA. x ___ BELT WIDTH.

DWG. NO. FORM 1015