

Dings Magnets Increase Efficiency and Revenue at MSW Facility

A History of Quality

In business since 1969, Johns Disposal Service, Inc., has built a reputation for having exceptional service and the highest quality recycled products. Johns is headquartered in Whitewater, WI, and services Dane, Jefferson, Kenosha, Milwaukee, Racine, Rock, Walworth and Waukesha counties.

Johns recently opened a new MSW facility in Franksville, WI. Their single stream system separates commingled glass, plastic, aluminum, steel and fiber into a clean, profitable material stream.

Dings Separators Help Meet Quality Standards

Since Johns already used Dings separators at their Whitewater facility, they contacted Dings to help size separators for their new Franksville location. Dings' experienced sales & engineering staff provided assistance choosing the right products, and ensured they were sized appropriately for their needs at this facility.

Now that things are up-and-running, they have found that the products are the perfect size and strength for their application.

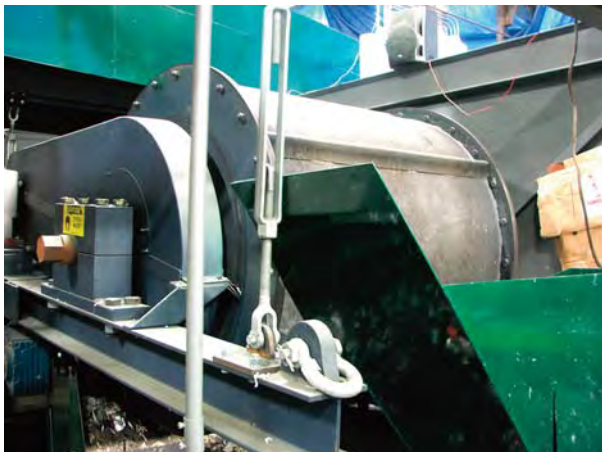
The new Franksville facility utilizes a 15" diameter **magnetic head pulley**. This inexpensive, easy-to-install pulley has collected up to one ton of small ferrous out of every 250 tons of product. This is material that was previously missed in the product stream.

heavy duty separator runs all day every day of operation, with no problems and **ZERO REPAIRS**- providing a clean, saleable product.



A Dings model 9148 **eddy current separator** recovers non ferrous metals in the product stream at Johns Disposal. According to Ron Jongetjes, Vice President, material recovery exceeds 98% - a very high recovery rate-and requires very little maintenance.

Dings eddy current separators use powerful rare earth magnets and a full diameter rotor design to provide more than double the magnetic force than that of any other manufacturer.



This 48" diameter x 48" width **magnetic deep draw drum** was installed to recover ferrous material. This

Dings Gets the Job Done

Johns currently processes 20 tons of product per hour at this facility. Jongetjes would like to increase this rate to 22 tons per hour. Ron has stated that the Dings magnets could handle **40 tons per hour or more** if necessary. “The Dings product does exactly what they say it will do- all day, every day, with no problems”.

With the Dings products in place, the needs of this MSW facility are being easily met.

For more information, see:

Johns Disposal Service, Inc. www.johnsdisposal.com

Dings Magnetics www.dingsmagnets.com